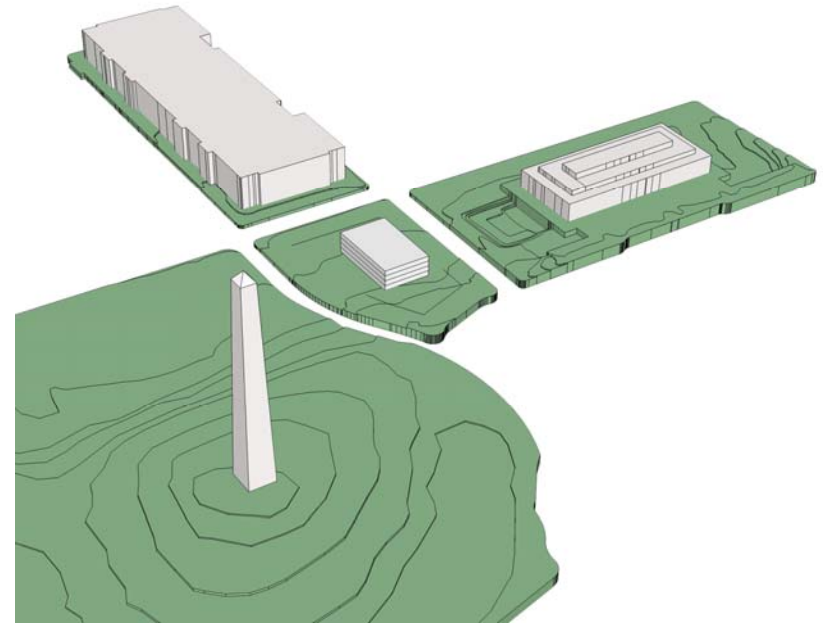
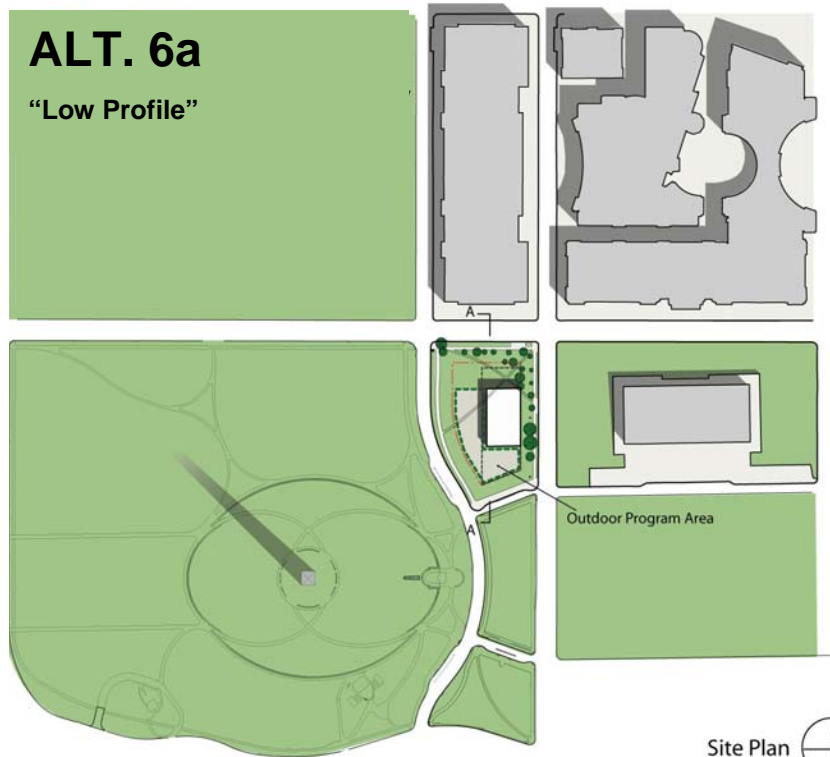




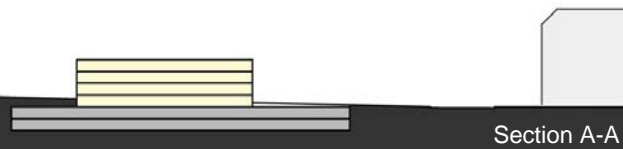
ALT. 6a

"Low Profile"



Site Plan

* Monument Grounds data provided by NPS and does not represent as-built conditions.



Section A-A

Program:

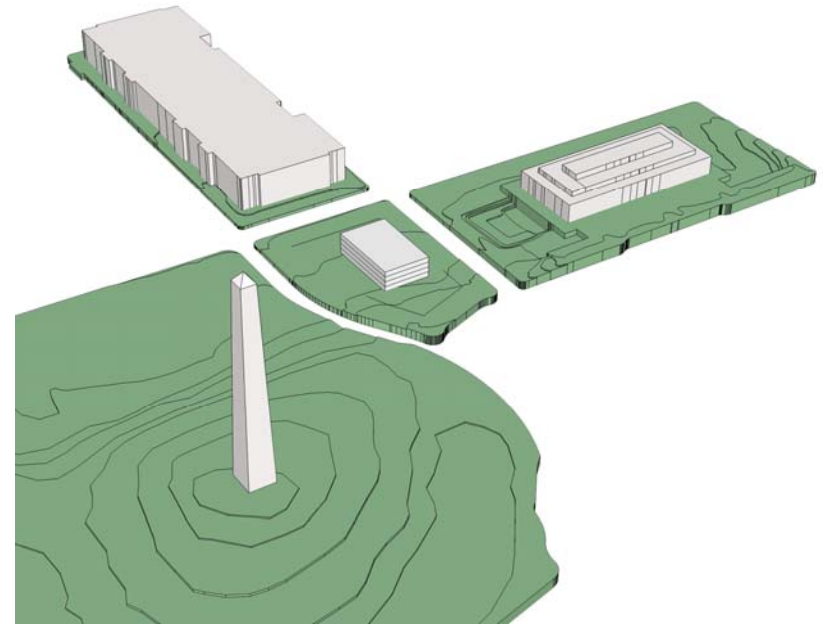
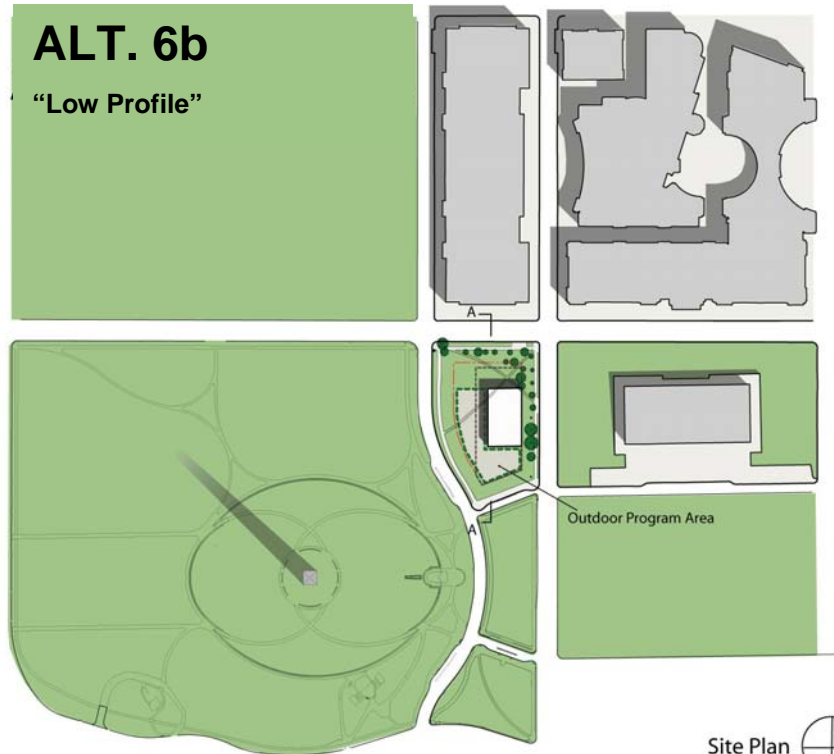
Above Grade	30,000 x 4 =	120,000 SF	60'
Below Grade	65,000 x 2 =	130,000 SF	
Total		250,000 SF	



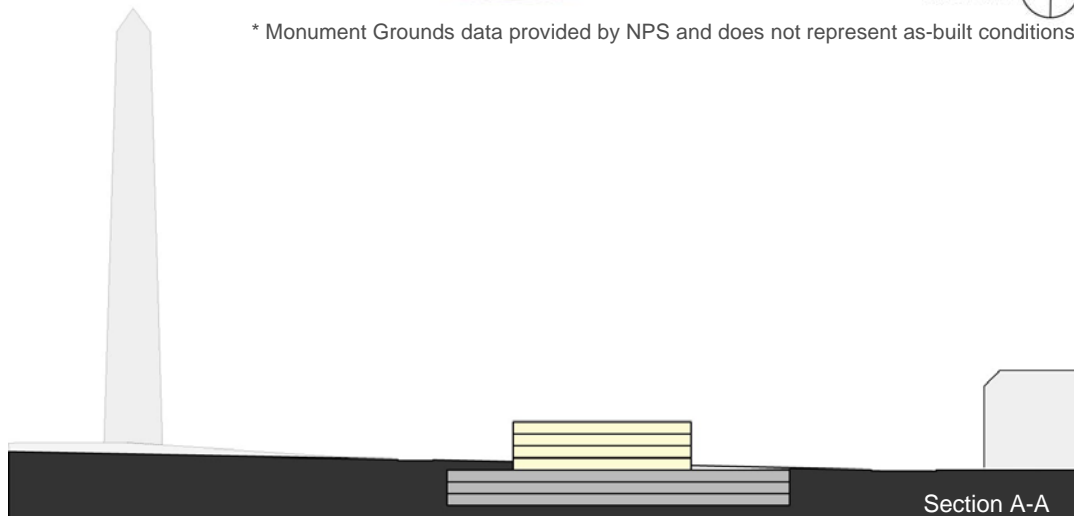


ALT. 6b

"Low Profile"



* Monument Grounds data provided by NPS and does not represent as-built conditions.



Program:

Above Grade	30,000 x 4 =	120,000 SF	60'
Below Grade	76,667 x 3 =	230,000 SF	
Total		350,000 SF	

